

THE COUNTY OF NORTHUMBERLAND

(FOREST AVENUE, LONGBENTON)

TREE PRESERVATION ORDER, 1972

To: D. Tait, Esq.,
28 Broadway Circle,
Blyth,
NE24 2PH

In accordance with the provisions of the County of Northumberland (Forest Avenue, Longbenton) Tree Preservation Order, 1972, the County Council of the Administrative County of Northumberland, as Local Planning Authority, HEREBY CONSENT to work being carried out to the trees specified in the first column below as shown in relation to those trees in the third column subject to the conditions mentioned in the fourth column:-

<u>Ref.No.</u>	<u>Description of trees</u>	<u>Details of Work</u>	<u>Condition</u>
T.7	Hawthorn, Wild Cherry,	Thinning of	That the
T.8	Sycamore and Mountain Ash	the crowns	natural
T.9	situated as described in	of the	shape of the
T.10.	the First Schedule to the	trees.	trees be
	above-mentioned Order and		maintained.
	shown on the map attached		
	thereto.		

DATED this 15th day of October, 1973.

(Sgt.) C.W. HURLEY

Clerk of the County Council

County Hall,
Newcastle upon Tyne,
NE1 1SA.

FIRST SCHEDULE

The map referred to is at a scale of 1:500 and is based on the 1:1250 O.S. Northumberland Editions of 1969 and 1971, Sheet No. NZ 2869 NW and SW, and the area covered by the Order lies wholly in the Urban District of Longbenton in the County of Northumberland

TREES SPECIFIED INDIVIDUALLY
(Encircled in black on the map)

No. on the map	Description	Situation
		<p>The following trees are measured from the mid-point of the junction of Westcroft Road and Croft Avenue.</p>
T1	Cedar	Approximately 186 feet in a north westerly direction.
T2	Cypress	Approximately 164 feet in a north westerly direction.
T3	Laburnum	Approximately 183 feet in a north westerly direction.
T5	Ash	Approximately 104 feet in a north westerly direction.
T6	Mountain Ash	Approximately 108 feet in a north westerly direction
T7	Hawthorn	Approximately 159 feet in a north westerly direction.
T8	Wild Cherry	Approximately 183 feet in a north westerly direction.
T9	Sycamore	Approximately 195 feet in a north westerly direction.
T10	Mountain Ash	Approximately 225 feet in a north westerly direction.
T4	Elm	<p>The following tree is measured from the se eastern corner of No. 59 Forest Avenue.</p> <p>Approximately 43 feet in a south westerly direction.</p>

TREES SPECIFIED BY REFERENCE TO AN AREA

NONE

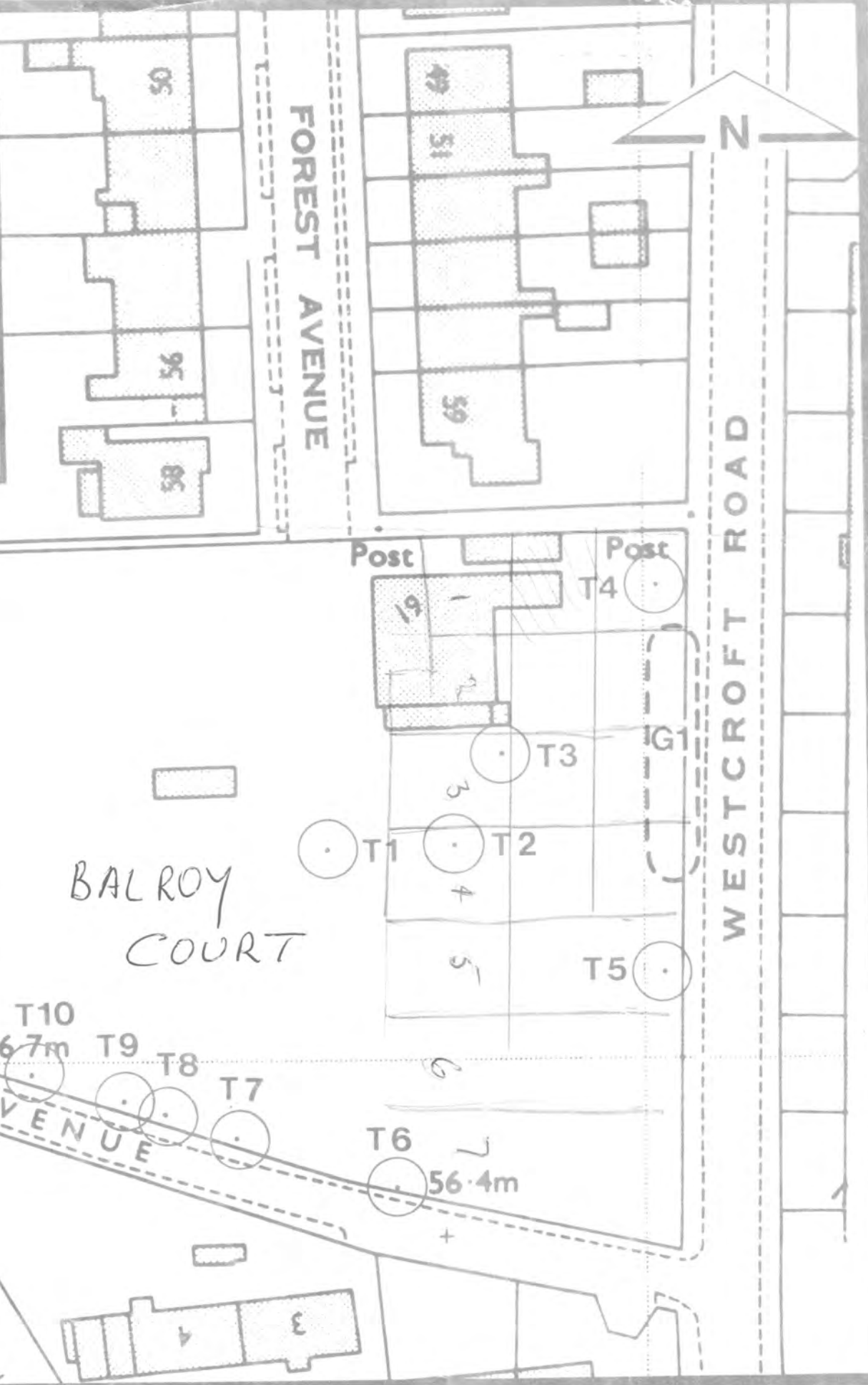
GROUPS OF TREES
(With a broken black line on the map)

No. on the map	Description	Situation
G1	Group consisting of 7 Hawthorn trees	Lying approximately 130 feet north from the mid-point of the junction of Westcroft Road and Croft Avenue and extending in a north/south direction for approximately 80 feet.

WOODLANDS

NONE

LOCATION MAP



J. B. ROSS.
F.R.I.C.S., F.R.T.P.I.
County Planning Officer.

COUNTY OF NORTHUMBERLAND.
(FOREST AVENUE, LONGBENTON).
TREE PRESERVATION ORDER 1972.

SCALE:- 1:500
DRG. No LA.TPO.1213.